



# ARKANSAS DEPARTMENT OF HEALTH

**Renee Mallory, RN, BSN**  
Secretary of Health

**Jennifer Dillaha, MD**  
Director

## Viral Respiratory Diseases Weekly Report 2023-2024

---

**Week Ending Saturday 04/06/2024**

---

**Mike Cima, PhD**  
State Epidemiologist

**Austin Porter III, DrPH, MPH**  
Deputy Chief Science Officer  
Deputy State Epidemiologist

**Prepared by:**

**Haytham Safi, MD, MPH**  
Epidemiology Supervisor  
Influenza Surveillance Coordinator  
[Haytham.Safi@Arkansas.gov](mailto:Haytham.Safi@Arkansas.gov)  
501-661-2920

**Reviewed by:**

**Lori Simmons, MS**  
Branch Chief, Epidemiology

**April 10, 2024**

The Arkansas Department of Health (ADH) produces a Weekly Viral Respiratory Diseases Report for clinicians. The report provides information on Influenza, COVID-19 and Respiratory Syncytial Virus (RSV) activity in the state. The report also compares activities in Arkansas to the U.S. ADH receives reports of only a fraction of COVID-19 cases and flu cases since it only requires reports of flu hospitalizations, deaths, and outbreaks. RSV is not a reportable disease in Arkansas. Therefore, it is important to understand that the information in the weekly update is representative of the timing and location of activity, but it does not reflect the overall disease burden. It is presumed that there are many more people actually affected than the report shows. Clinicians and policymakers may find the report helpful in terms of communicating to colleagues and patients about the current status of viral respiratory diseases in the state and nationwide.

### **Report Key Points for Week 14:**

- Arkansas reported “Minimal” or 3 out of 13 for the Influenza-Like-Illness (ILI) activity level indicator determined by data reported to ILINet.
- Hospital Emergency Department visits reported through Syndromic Surveillance were at 2.75% for Influenza-Like-Illness (ILI), 1.54% for COVID-Like-Illness (CLI), and 0.03% for Respiratory Syncytial Virus (RSV).
- Outpatient visits for ILI reported through ILINet from the Sentinel Providers were at 2.00%.
- The average school absenteeism rate last week was 6.97% among public schools.
- Arkansas reported 114 influenza-related deaths in the 2023-24 flu season, including 1 pediatric death. Of these, 70% were not vaccinated.
- Nationally, CDC estimates that there have been at least 32 million illnesses, 360,000 hospitalizations, and 22,000 deaths from flu so far this season.
- Arkansas reported no COVID-19-related deaths this week with a total of 710 deaths in 2023 and 132 since 01/01/2024. The weekly deaths reflect week reported not date of death.
- This flu season, 36 influenza outbreaks have been reported from nursing homes or other congregate setting institutions.
- Nationally, the proportion of deaths reported to the National Center for Health Statistics that were attributed to pneumonia, influenza and COVID-19 (PIC) was at the epidemic threshold this week.

**You can report flu year-round and view the Viral Respiratory Disease Weekly Report during the influenza season at:**  
<http://www.healthy.arkansas.gov/programs-services/topics/influenza>. You can also access the reporting website directly at:  
<https://FluReport.ADH.Arkansas.gov>.

**For additional national and international influenza and other respiratory diseases surveillance information:**  
**World Health Organization (WHO):** <https://www.who.int/tools/flunet>  
**CDC - Seasonal influenza (Flu) - Weekly Report:** <http://www.cdc.gov/flu/weekly/>

**Other respiratory viruses:** visit the national respiratory and enteric virus surveillance system (NREVSS):  
<https://www.cdc.gov/surveillance/nrevss/index.html>

# 2023-2024 Viral Respiratory Diseases Weekly Report (Week 14: 03/31/2024 – 04/06/2024)

## Deaths Reported for Week 14\*

\* Deaths reflect week reported not date of death.

- Deaths from all causes: 710
- Deaths due to Pneumonia: 62
- Deaths due to Flu: 4
- COVID-19 Related Deaths: 0

## Cumulative Deaths

- Total Flu deaths since 10/01/23: 114
- Total COVID deaths in 2023: 710
- Total COVID deaths since 01/01/24: 132

## New Hospital Admissions

- Flu Week ending 04/06/2024: 18
- COVID Week ending 04/06/2024: 41

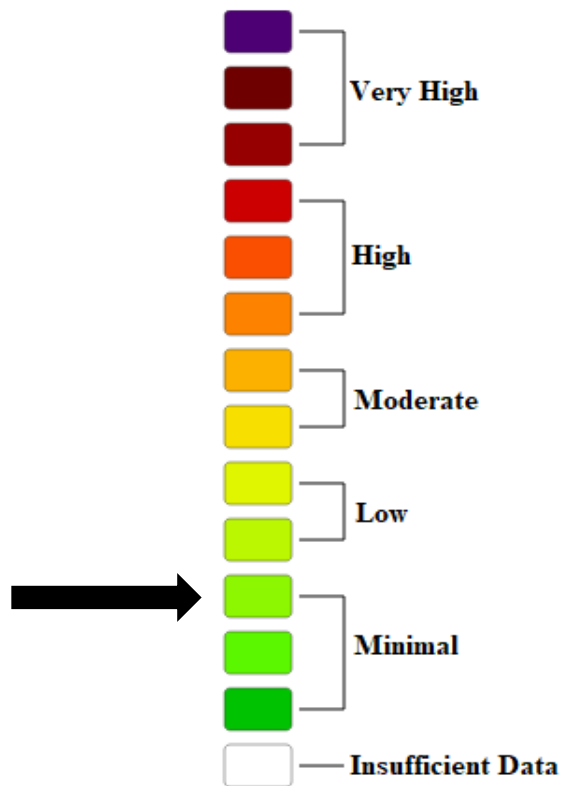
## School Absenteeism\*

\* Average daily absenteeism for all public schools during this reporting week.

Week Ending: 04/06/2024

- Percent Absent: 6.97
- Previous Week: 7.20

## Weekly Arkansas ILI Intensity Level Reported by Sentinel Providers



## Lab Confirmed Influenza Cases

Reported flu cases reflect only a portion of the actual numbers of flu cases in the state.

Tests	Week14	Cumulative Cases Since 10/01/2023
Flu A+	111	11,353
Flu B+	34	7,188
Flu A and B	4	176
Flu B/Victoria	0	20
Flu B/ Yamagata	0	0
Flu A, H1N1+	0	57
Flu A, H3+	0	159
Unsubtypeable	0	0
<b>Total</b>	<b>149</b>	<b>18,953</b>

## Influenza Reported Cases, Hospitalization and Death Cumulative Cases Since 10/01/2023

Age Groups	Cases	Hospitalized	Deaths
0-4 yr.	2,649	68	0
5-17 yr.	6,262	64	1
18-24 yr.	1,453	46	3
25-44 yr.	3,647	169	5
45-64 yr.	2,595	365	24
>= 65 yr.	2,309	768	81
<b>Unknown</b>	<b>38</b>	<b>0</b>	<b>0</b>
<b>Total</b>	<b>18,953</b>	<b>1,480</b>	<b>114</b>

## ER Visits (Syndromic Surveillance)

### Week Ending: 04/06/2024:

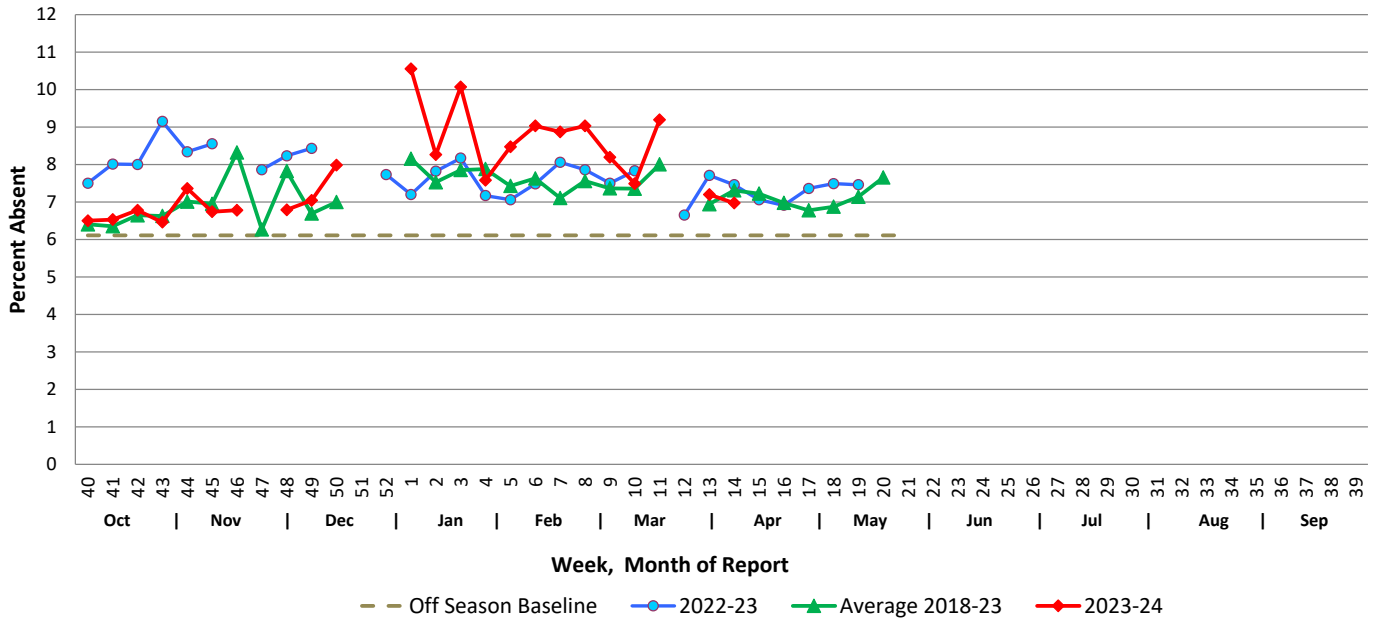
- Total (% of Visits)
- Total ER Visits: 15,701
  - Visits with ILI: 432 (2.75%)
  - Visits with CLI: 242 (1.54%)
  - Visits with RSV: 4 (0.03%)

### Previous Week:

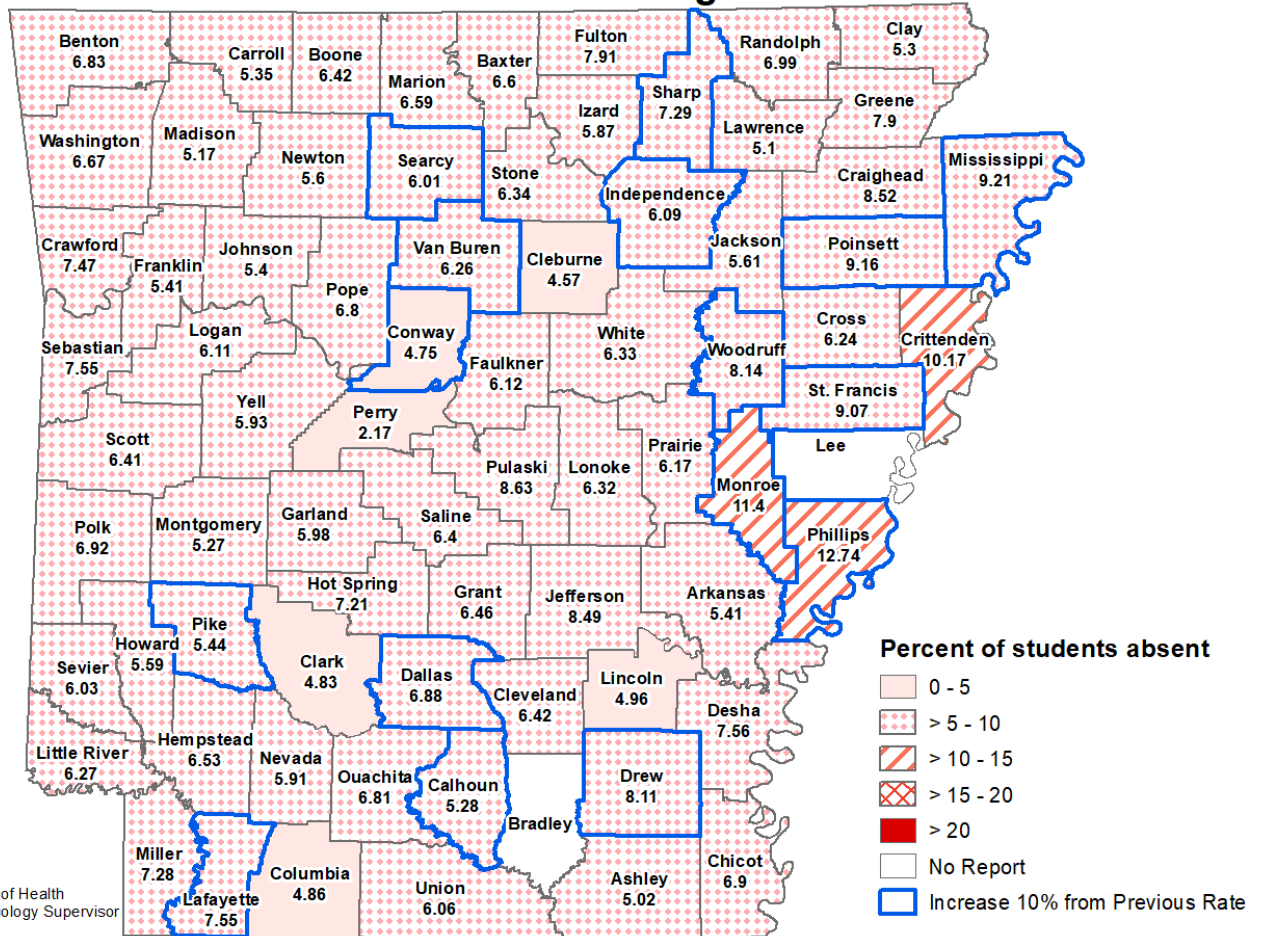
- Total (% of Visits)
- Total ER Visits: 15,716
  - Visits with ILI: 490 (3.12%)
  - Visits with CLI: 238 (1.51%)
  - Visits with RSV: 10 (0.06%)

# School Report

## Weekly School Absenteeism Rates, Arkansas Public Schools



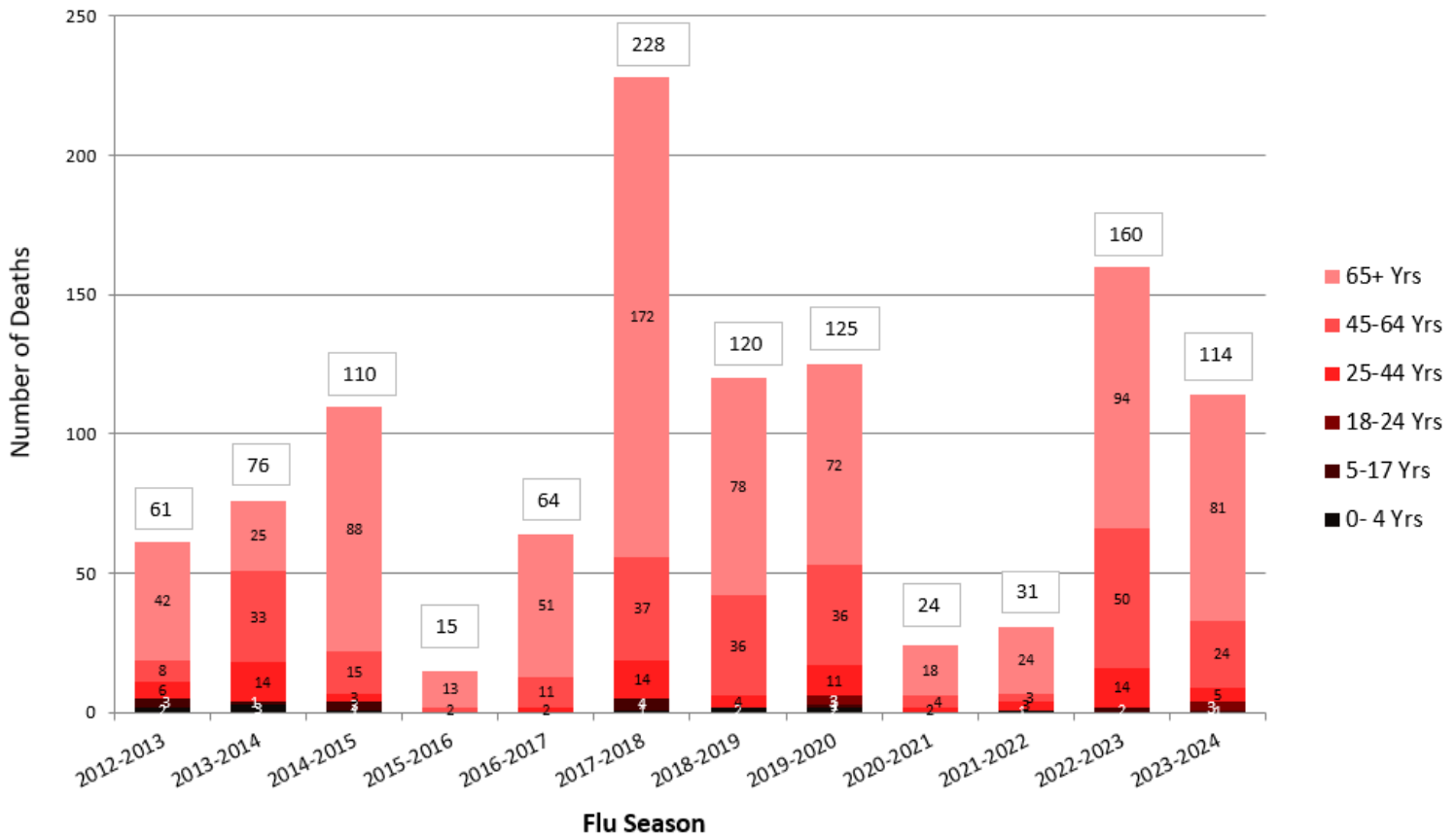
## School Absenteeism Rate per County, Arkansas 2023-2024 Percent Absent for Week Ending 4/6/2024



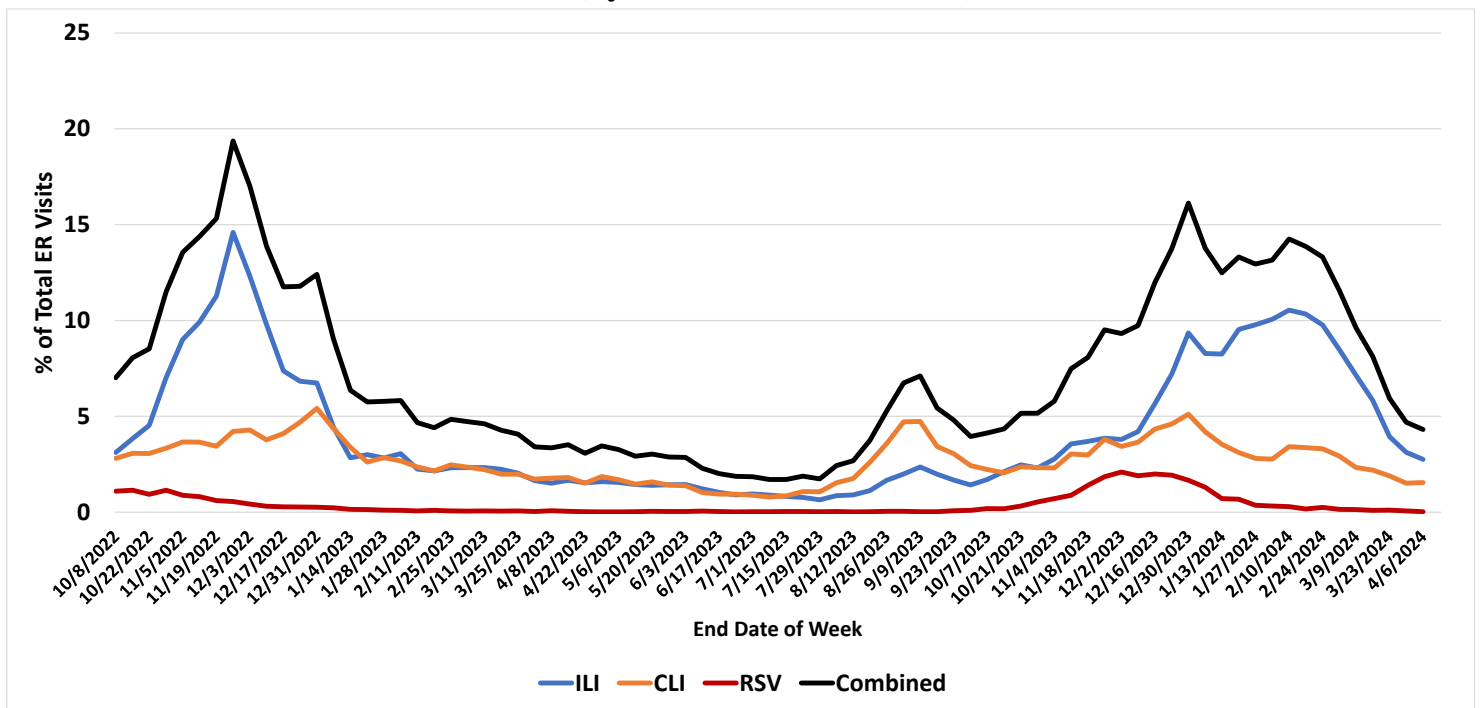
Date: April 8, 2024  
 Source: Arkansas Department of Health  
 Author: Haytham Safi, Epidemiology Supervisor

## Influenza Mortality by Age Group, Arkansas 2012-2024 (Provisional)

Report Updated: 04/09/2024

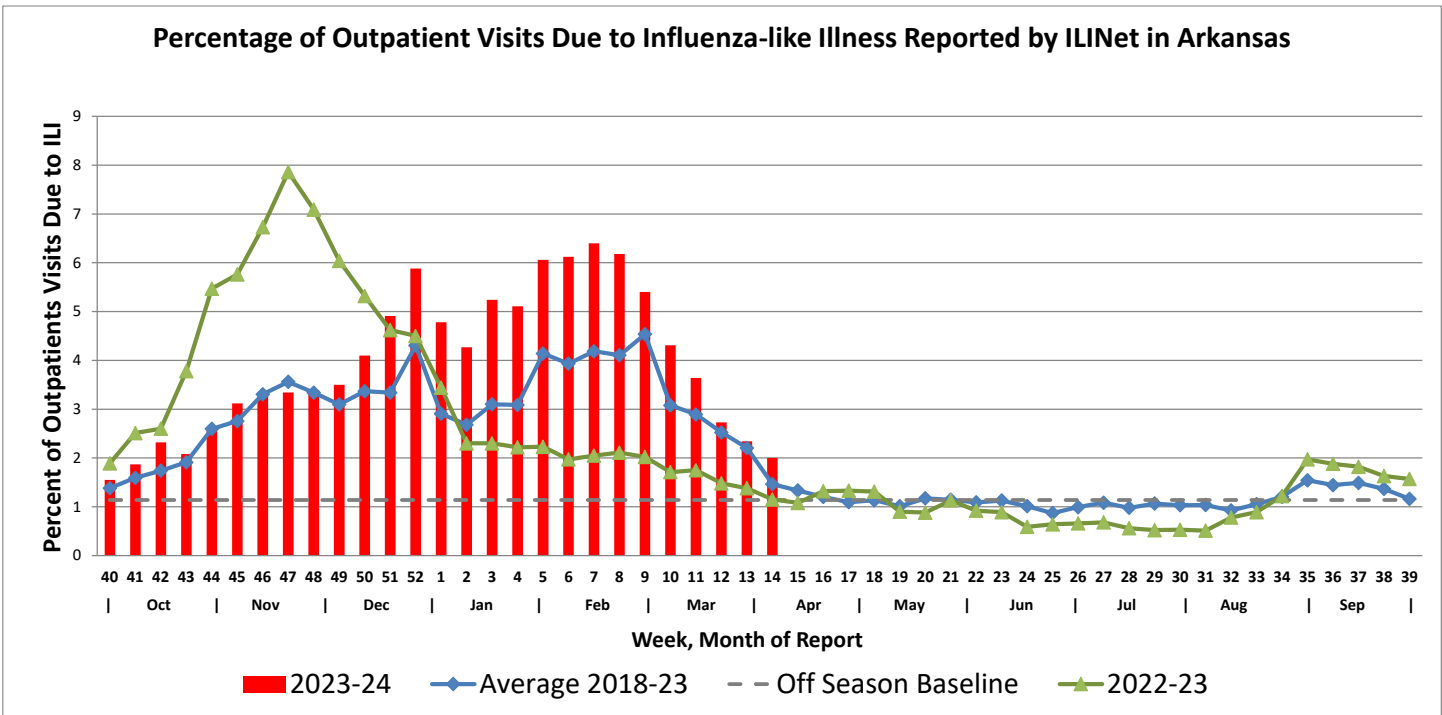


## Emergency Department Visits for ILI, CLI and RSV, Arkansas Data Downloaded from NSSP (Syndromic Surveillance)

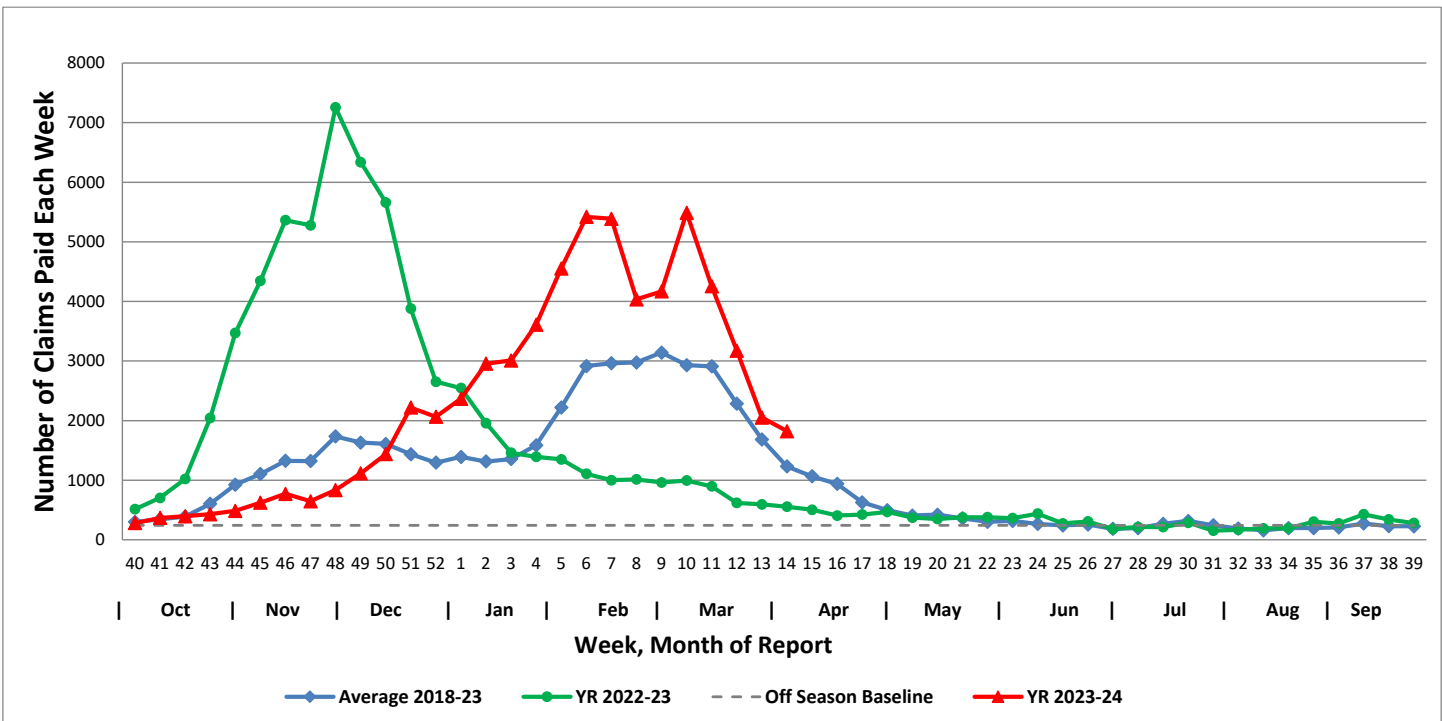


# Arkansas Subset of US Outpatient Influenza Surveillance (ILINET)

## Percentage of Outpatient Visits Due to Influenza-like Illness Reported by ILINet in Arkansas

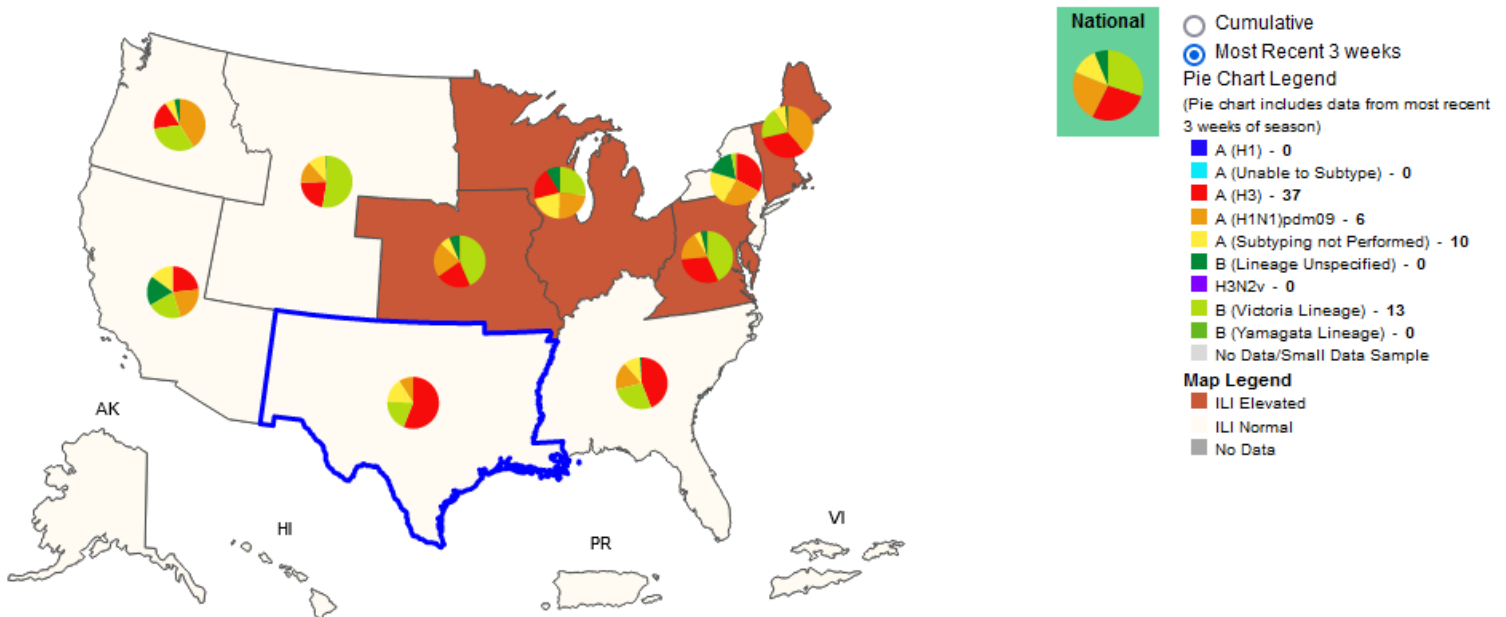


# Weekly Influenza Claims Paid by Medicaid and BCBS of Arkansas

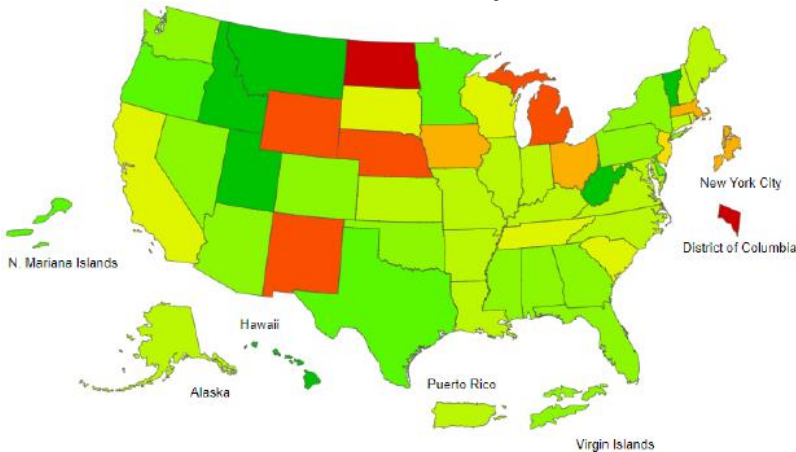


# Influenza Positive Tests Reported to CDC and ILI Activity, by HHS Region Public Health Labs, 2022-2023 Season, Week Ending Mar 30, 2024

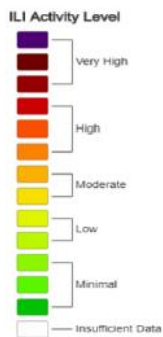
Values in legend are for the highlighted HHS region (Region 6) for the most recent 3 weeks.



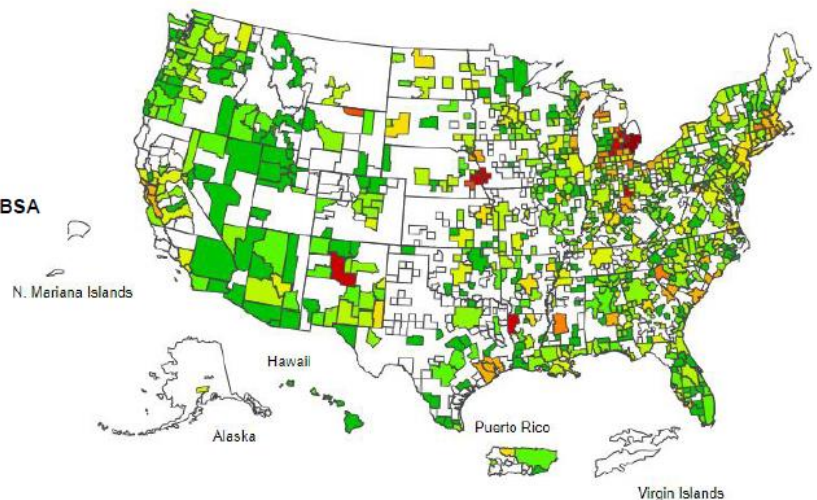
## Influenza-Like-Illness Activity Level Indicator Determined by Data Reported to ILINet



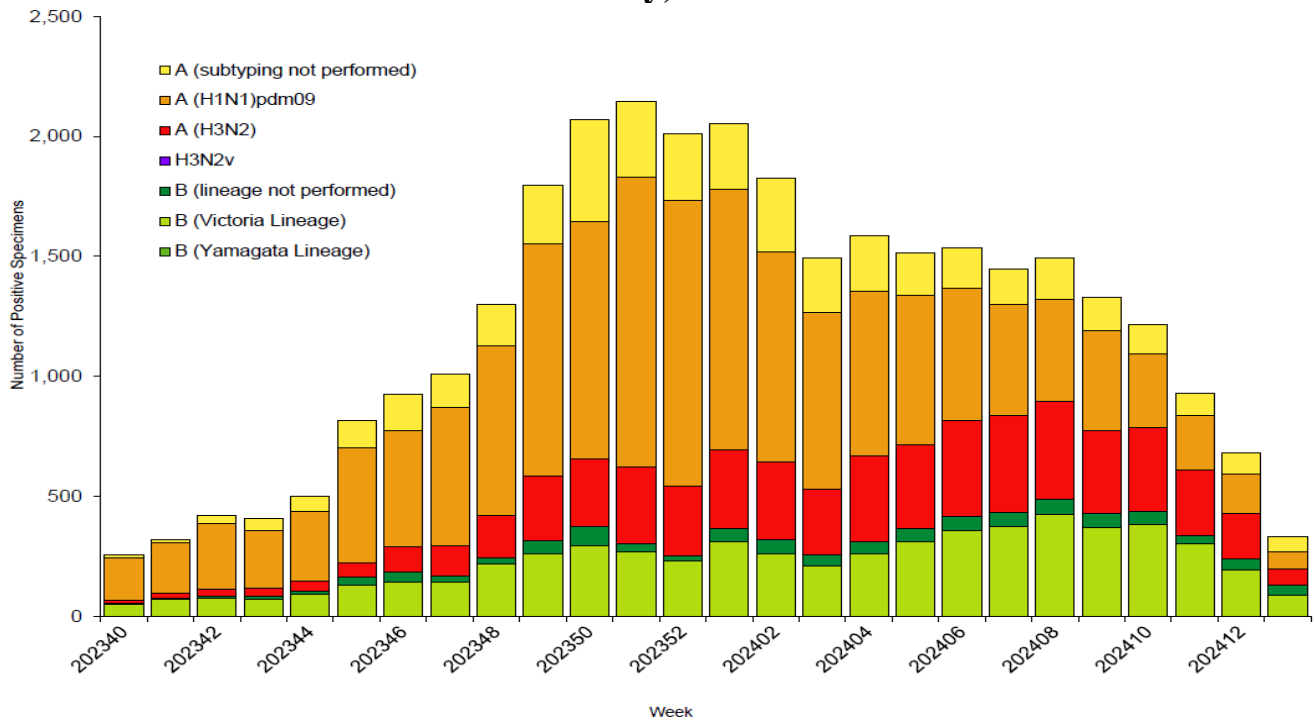
This system monitors visits for ILI (fever and cough or sore throat), not laboratory confirmed respiratory viruses and may capture patient visits due to other respiratory pathogens that cause similar symptoms.



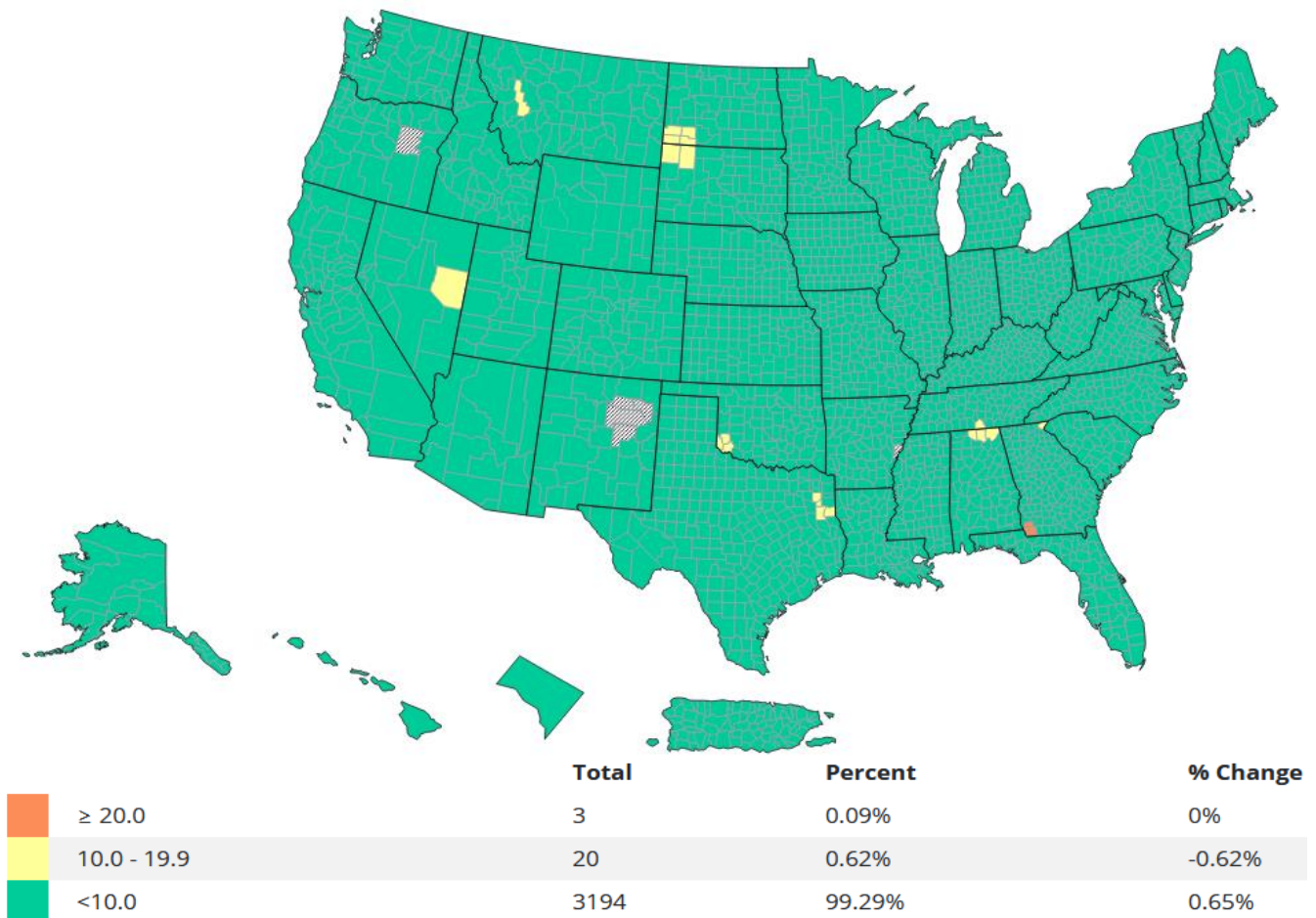
**Outpatient Respiratory Illness Activity by CBSA**  
Week 13, ending March 30, 2024



## Influenza Positive Tests Reported to CDC by U.S. Public Health Laboratories, National Summary, 2023-2024 Season



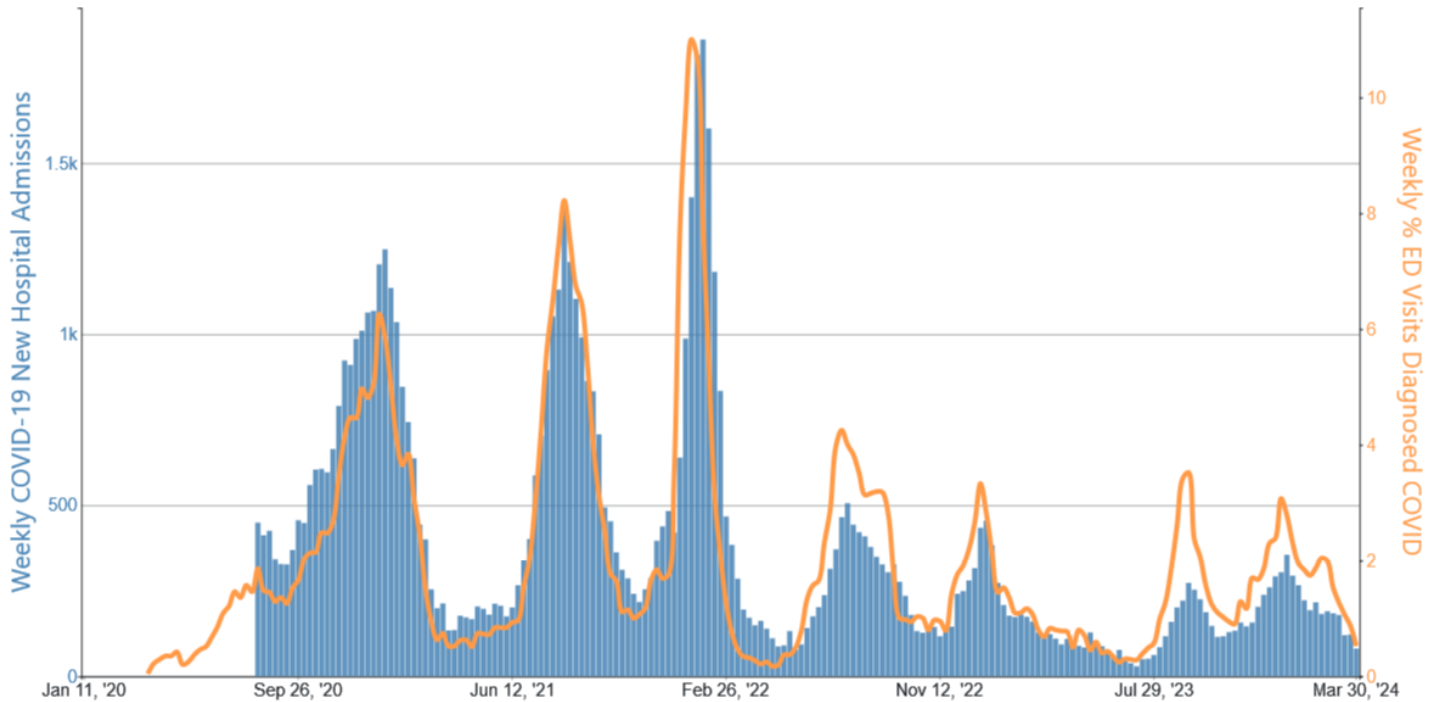
## Reported COVID-19 New Hospital Admissions Rate per 100,000 Population for Week Ending 03/30/2024, by County of Residence – United States



Source: [https://covid.cdc.gov/covid-data-tracker/#maps\\_new-admissions-rate-county](https://covid.cdc.gov/covid-data-tracker/#maps_new-admissions-rate-county).

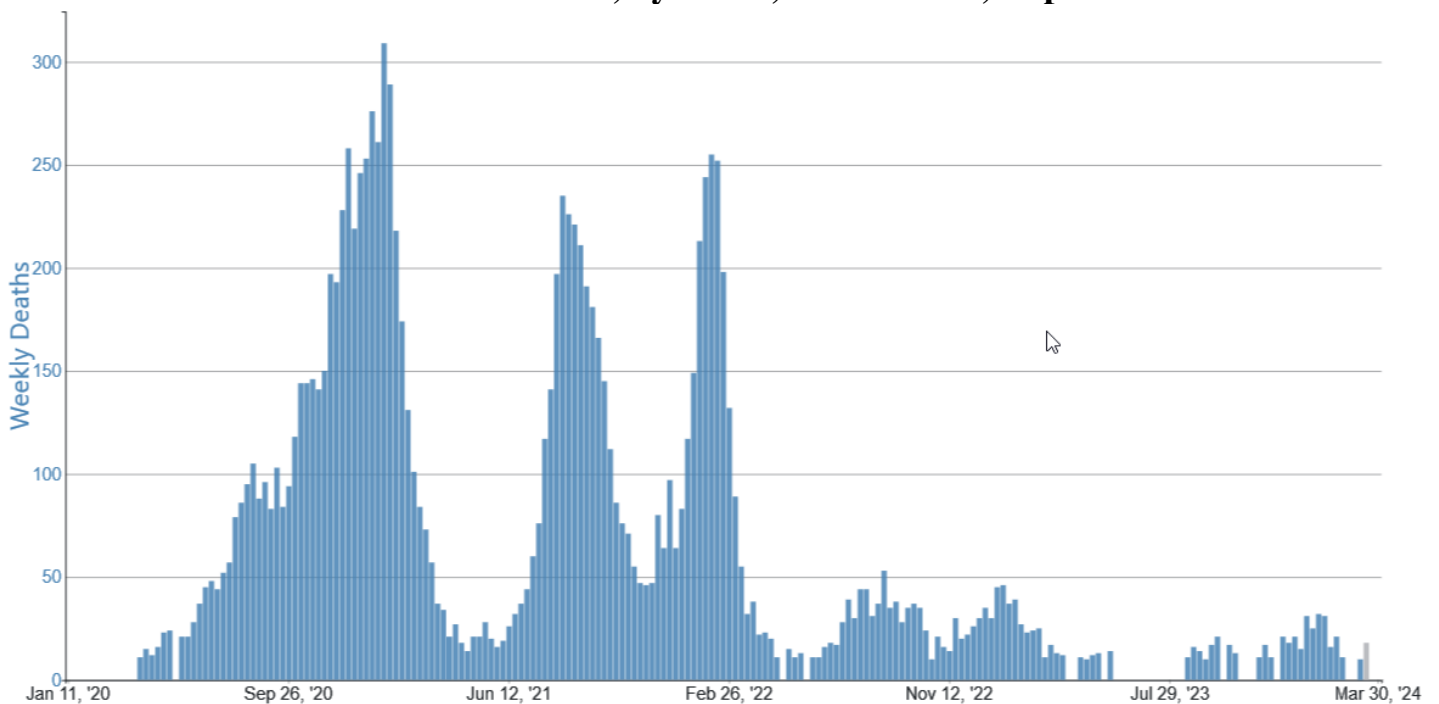


## COVID-19 New Hospital Admissions and Percentage of Emergency Department (ED) Visits Diagnosed as COVID-19, by Week, in Arkansas, Reported to CDC



Source: COVID-19-associated hospitalization data reported to CDC's National Healthcare Safety Network (NHSN).

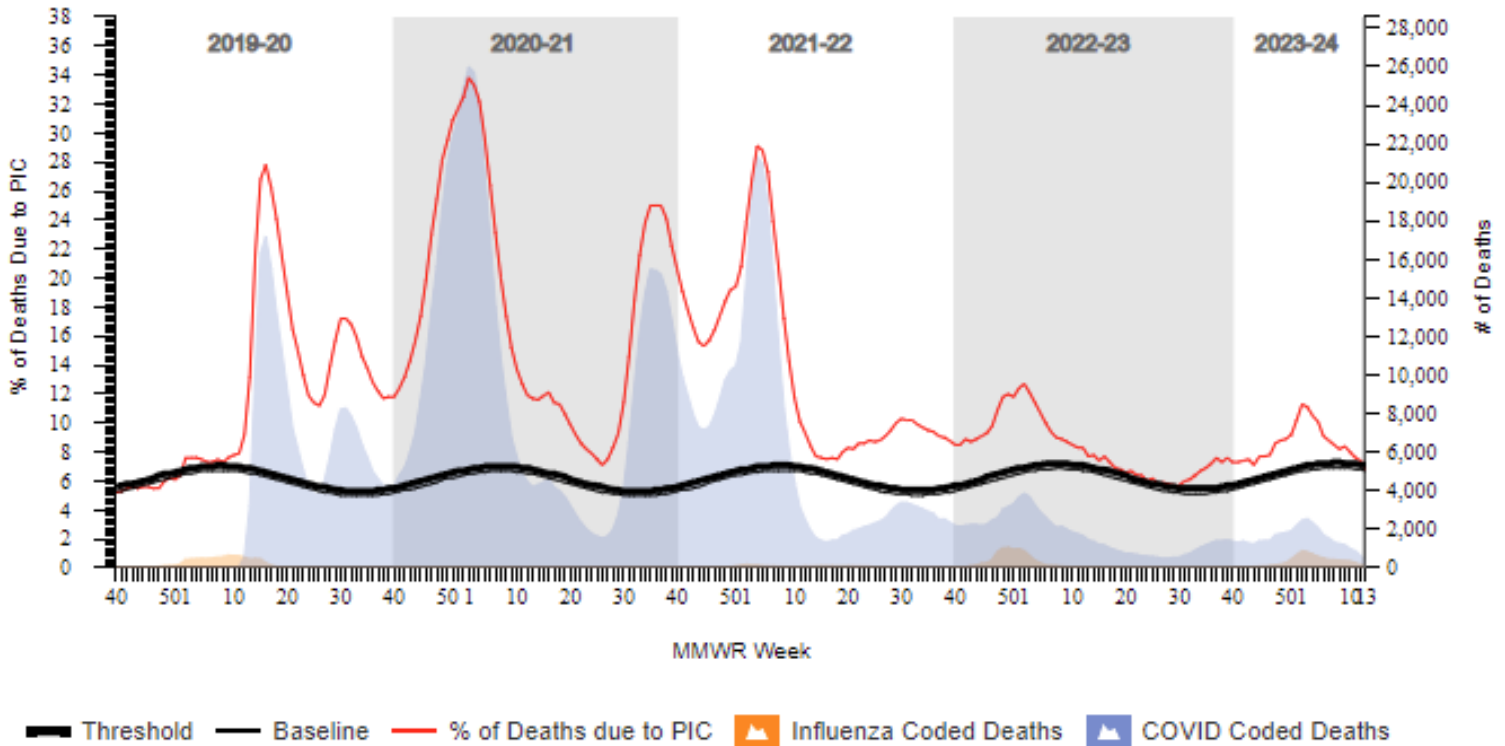
## Provisional COVID-19 Deaths, by Week, in Arkansas, Reported to CDC\*



Source: Provisional Deaths from the CDC's National Center for Health Statistics (NCHS) National Vital Statistics System (NVSS).

\*Weeks with number of deaths between 1-9 are suppressed (Not Shown).

**Pneumonia, Influenza and COVID-19 (PIC) Mortality from the National Center for Health Statistics Mortality Surveillance System Data as of April 4, 2024, National Data**



**Pneumonia, Influenza and COVID-19 (PIC) Mortality from the National Center for Health Statistics Mortality Surveillance System Data as of April 4, 2024, Arkansas Data**

