

The Arkansas Department of Health Van Buren County Because Your Health Matters



Making Your County Healthier

The Arkansas Department of Health (ADH) is a centralized public health system with four main Centers and the Public Health Laboratory that work with 94 local health units to provide clinical preventive services, administer public health programs, and issue licenses and certificates. Everything at ADH is done because we believe that communities can be healthier and safer, and people can live longer.

Clinical Preventive Health Services

- Immunizations
- Women's health services
- Women, Infants and Children (WIC) nutrition program
- Testing and support for tuberculosis and sexually transmitted diseases, including HIV

Public Health Programs

- Infectious disease investigations
- Statewide trauma system
- Local emergency preparedness planning
- Tobacco prevention and cessation programs
- Statewide prescription drug monitoring program
- Hometown Health Improvement
- Chronic disease prevention and management

Licensing and Certification

- Vital records (birth, death, marriage)
- Restaurant inspections
- Tests for drinking water
- Hospital and Emergency Medical Services (EMS) Licensing

Services Information

Budget and Employees, Fiscal Year 2018^a

Health Department Budgeted Annual Salary/Fringe	\$424,980
Health Department Employees	8

Environmental Services, Fiscal Year 2017

Food Establishment Inspections	161
Onsite Wastewater System Inspections	40
Swimming Pool Inspections	43

Local Health Unit Visits, Fiscal Year 2017

BreastCare	8
Family Planning	398
General Medical	23
HIV/STD	63
Immunizations	575
Maternity	64
Tuberculosis	82
Women, Infants, and Children (WIC)	685

Women, Infants, and Children (WIC), Fiscal Year 2017

Number of Vendors	5
Payments to WIC Vendors	\$260,455
WIC Clients Served Annually	622

^aIncludes County employees only.



ARKANSAS
DEPARTMENT OF HEALTH

Van Buren County

Demographics	Description	Number	Percent	Rank	State %
Total Population	The number of people who live in the county.	16,892	N/A	48	0.6%
White (Non-Hispanic)		15,830	93.7%	15	73.4%
Black (Non-Hispanic)		11	0.1%	73	15.4%
Hispanic or Latino Origin		488	2.9%	42	7.0%

U.S. Census Bureau, 2012-2016 Population Estimates: Ranks are based on the percent of the total population. Ranks are 1= highest and 75 = lowest.

Economic Indicators	Description	Number	Percent	Rank	State %
Median Household Income	The income at which half the households earn more and half the households earn less.	\$34,576	N/A	53	\$42,336
People of All Ages in Poverty	People of all ages living below the Federal Poverty Line (FPL).	3,125	18.5%	18	18.8%
Children in Poverty	Children under age 18 living below the Federal Poverty Line (FPL).	906	26.8%	22	26.8%
Children in Single Parent Homes	Children that live in a household headed by single parent.	1,130	33.4%	30	35.4%
Uninsured	Population under age 65 without health insurance.	2,541	20.1%	72	14.5%
No transportation	Households with no transportation.	381	5.6%	29	6.4%

Injury*	Description	Number	Rate	Rank	State Rate
Injury Related Hospital Discharges	All injury related hospital discharges.	611	560.7	44	512.6
Unintentional Fall Discharges	Hospital discharges from falls due to loss of balance and not due to paralysis or injury.	329	240.3	53	222.8
Motor Vehicle Accident Discharges	Hospital discharges from motor vehicle accidents including cars, motorcycles and ATVs.	93	106.2	60	69.5
Traumatic Brain Injury Discharges	Hospital discharges due to injury resulting from external mechanical forces.	24	24.2	49	20.9
Deaths from Injury	Deaths from intentional and unintentional (accidental) injuries, 5-year average.	17	92.3	47	78.5

*When low numbers result in unstable injury or death rates, rates are not displayed. Rank was calculated for those counties where rates were available. Rates are per 100,000 population. Injury related discharges are 5-year averages. 5-year average indicates the average number of annual deaths for the most recent 5 years of available data.

Health Indicators†	Description	Number	Percent	Rank	State %
Current adult smokers	Adults (18+) reporting being current smokers.	2,775	20.7%	39	24.9%
Current youth smokers	Students grades 6-12 reporting being current smokers.	126	10.4%	67	5.6%
Low Birth-Weight Babies	Live births where the infant weighed less than 2,500 grams (5 lbs., 8 oz.), 5-year average.	12	7.5%	21	8.8%
Life Expectancy	The average expected life time (in years) from birth.	77.1 yrs.	N/A	5	76.0 yrs.
Natural Teeth	Adults 65+ who have had all their natural teeth extracted.	1,664	12.5%	6	23.0%
Water Systems with Fluoridation	Public water systems containing enough fluoride to protect teeth.	6	85.7%	9	49.7%

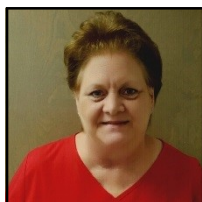
		Number	Rate	Rank	State Rate
Infant Mortality, 2012-2016	Measures the number of deaths among children less than one year of age .	5	6.3	31	7.1
Teen births	Births to mothers aged 15 to 19 years, 5-year average.	19	44.3	34	39.5

†5-year average is shown for low birth-weight babies and teen births and indicates the number of births on average each year for the most recent 5 years of available data; Infant mortality number is the total number of deaths over the most recent 5 years available and infant mortality rate is an estimate of the number of infant deaths for every 1,000 live births; Teen birth rates are per 1,000 female population ages 15-19 years.

Major Health Risk Factors	Description	Number	Percent	Rank	State Rate
Food Insecurity	The population who did not have access to a reliable source of food during the past year.	2,980	17.5%	30	18.4%
Physical Inactivity	Adults (Age 18+) reporting no leisure-time physical activity .	5,263	39.6%	66	32.5%
Obesity (adults)	Adults (Age 18+) reporting being obese (BMI >= 30.0)	5,063	38.1%	42	35.7%
Overweight (adults)	Adults (Age 18+) reporting being overweight (BMI >=25.0 - 29.9).	3,882	29.2%	15	32.5%
Obesity (youth)	Students grades K-10 with a BMI >= 95th percentile for age and sex.	598	23.3%	35	22.0%
Overweight (youth)	Students grades K-10 with a BMI >=85th percentile to <95th percentile for age and sex.	486	18.9%	67	17.0%
Low Health literacy	Adults with basic or below basic health literacy skills.	4,947	36.5%	29	37.1%
Substance Abuse (youth)	Students grades 6-12 reporting using drugs in the past 30 days.	122	10.0%	41	9.9%

For more information contact:

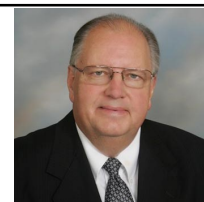
526 Quality Dr.
Clinton, AR 72031
Phone: 501-745-2485
Fax: 501-745-2435
Hours: 8:00 a.m. - 4:30 p.m.
Mon. - Fri.



Donna Branscum
LHU Administrator

COUNTY JUDGE

Roger Hooper
273 Main St.
Clinton, AR 72031
Phone: 501-745-2443
Fax: 501-745-6278



COUNTY HEALTH OFFICER

Jose Abiseid, M.D.

